

DYNAMICSEAL SDH 20

SHAFT SLEEVES

Standard and custom solutions
Especially designed to suit the specific application

Designed for the special conditions of use, shaft sleeves are manufactured in various forms and from a wide range of materials. They are the ideal choice to protect the shaft of all shaft seal types against wear and tear.

SHAFT SLEEVES

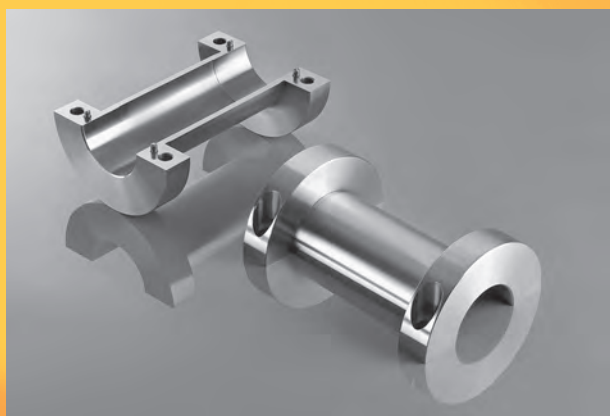
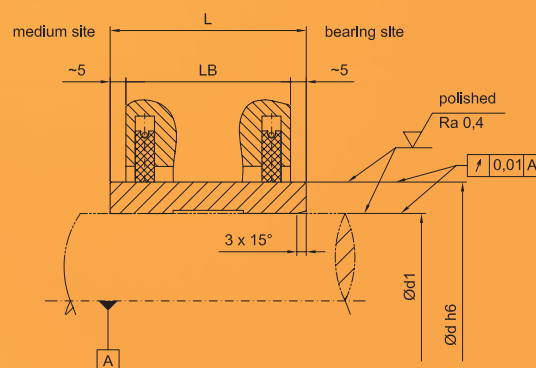
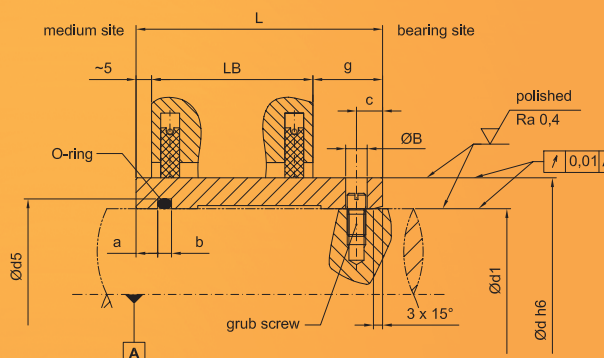
The **STASSKOL DynamicSeal** shaft sleeves place high demands on concentricity and the wear protection of the shafts. For this purpose, special type **SDH20** shaft sleeves are used.

Dependent on the application, the shaft sleeves are manufactured from chromium steel 1.4086 or steel such as 1.4462 or 1.4571. In order to achieve a high operating time, a metallic or ceramic coating is required.

The shaft sleeves are additionally offered with axial or radial sealing rings. This ensures that the medium cannot escape to the bearing side.

The torque transfer between the shaft and shaft sleeve is achieved by implemented frictionally connection (shrunk shaft sleeve) or interlocking connection (threaded pin).

For a frictional connection it has to be ensured that the heat expansion coefficients of the shaft sleeve and shaft are almost identical. This rule out the loosening of the shaft sleeves, even in cases of high temperature differences.



SPECIAL CONSTRUCTION

Customised designs varying from the standard construction is always possible. Shaft sleeves in split versions facilitate the assembly and are very inspection friendly.



STASSKOL GmbH
D - 39418 Stassfurt
Maybachstrasse 2

Phone: +49 (0) 39 25 / 288-100
Fax: +49 (0) 39 25 / 288-105
e-Mail: info@stasskol.de
Website: www.stasskol.de